





Geringe Abweichungen bei Farbe und Struktur können nicht ausgeschlossen werden und berechtigen nicht zur Reklamation. | Geringe afwijkingen van kleur of structuur kunnen niet uitgesloten worden en zijn geen grond voor reclamatie. | Slight differences in colour and structure cannot be excluded and do not justify complaints. | Des faibles divergences en couleur et structure ne peuvent pas être excus et ne justifient pas de réclamations.

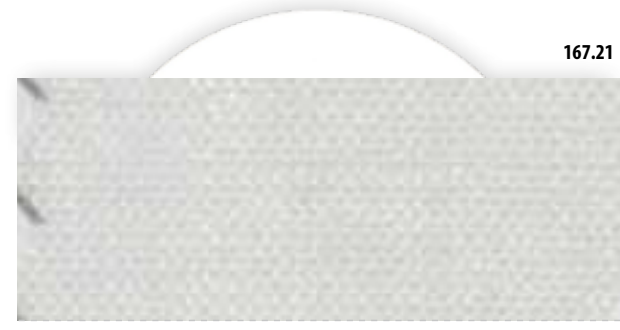


418.00

PG 1

T-CS

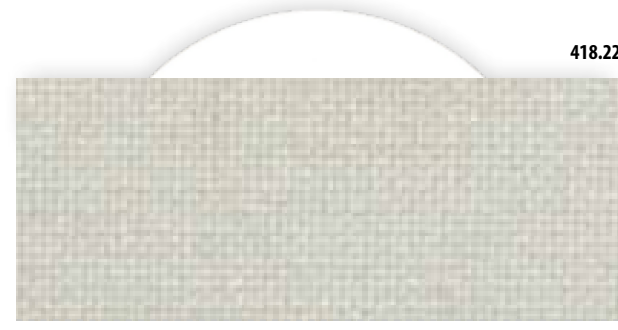
PES



167.21

PG 1

PES



418.22

PG 1

T-CS

PES



167.19

PG 1

PES



322.20

PG 2

PES



401.12

PG 2

T-CS

PES



190.21

PG 0

PES



266.21

PG 2

PES



319.19

PG 2

PES



069.18

PG 1

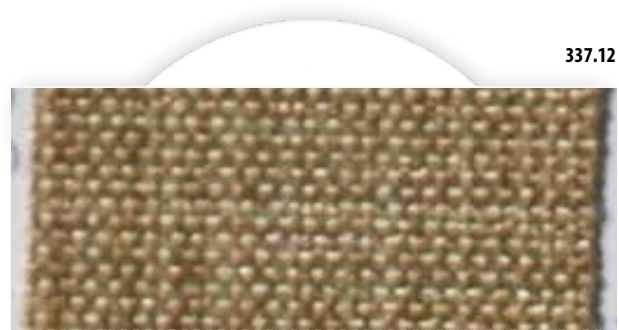
PES



337.18

PG 3

PES



337.12

PG 3

PES



220.21

PG 2

PES



052.21

PG 2

PES



220.19

PG 2

PES



418.18

PG 1

T-CS

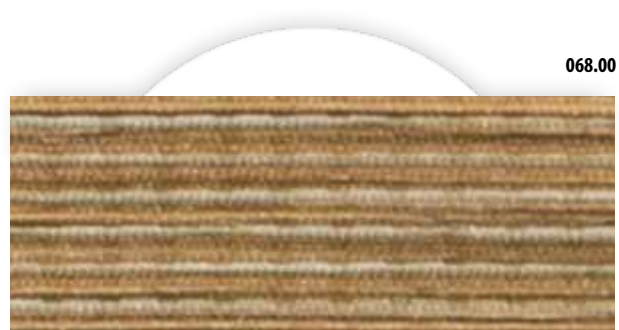
PES



336.18

PG 2

PES



068.00

PG 2

PES



401.21

PG 2

T-CS

PES



501.21

PG 2

PES



190.19

PG 0

PES



401.19

PG 2

T-CS

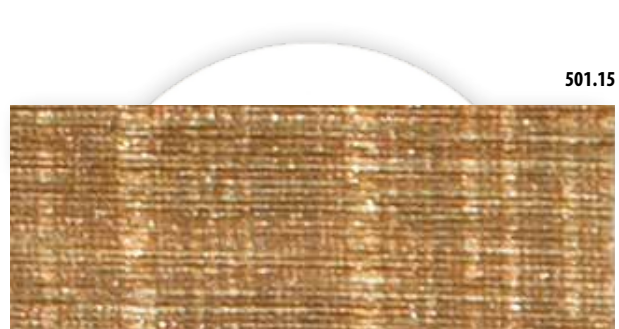
PES



322.18

PG 2

PES



501.15

PG 2

PES



336.21

PG 2

PES



337.21

PG 3

PES



319.18

PG 2

PES



068.05

PG 2

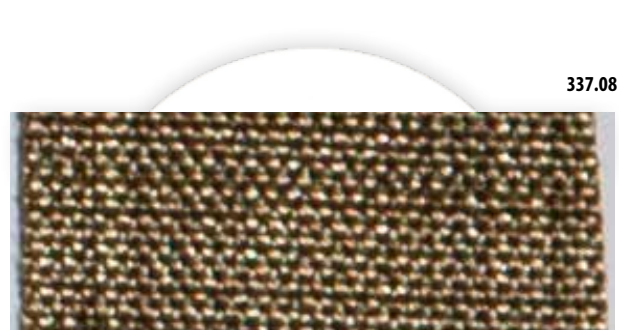
PES



167.12

PG 1

PES



337.08

PG 3

PES





319.27

319.27

319.27

319.27



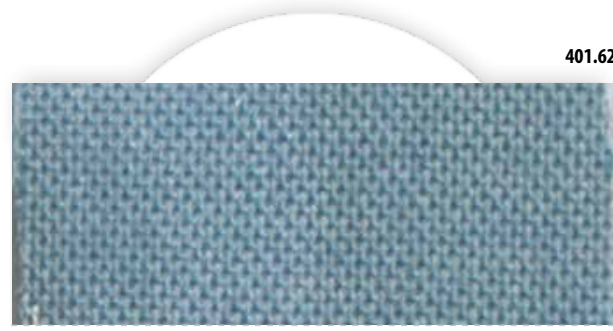
Geringe Abweichungen bei Farbe und Struktur können nicht ausgeschlossen werden und berechtigen nicht zur Reklamation. | Geringe afwijkingen van kleur of structuur kunnen niet uitgesloten worden en zijn geen grond voor reclamatie. | Slight differences in colour and structure cannot be excluded and do not justify complaints. | Des faibles divergences en couleur et structure ne peuvent pas être excus et ne justifient pas de réclamation.



501.23 PG 2 PES



220.31 PG 2 PES



401.62 PG 2 T-CS



401.91 PG 2 T-CS



418.01 PG 1 T-CS



068.08 PG 2 PES



190.22 PG 0 T-CS



167.32 PG 1 PES



190.62 PG 0 PES



220.91 PG 2 PES



412.01 PG 2 T-CS



220.01 PG 2 PES



220.23 PG 2 PES



068.02 PG 2 PES



068.06 PG 2 PES



319.84 PG 2 PES



401.02 PG 2 T-CS



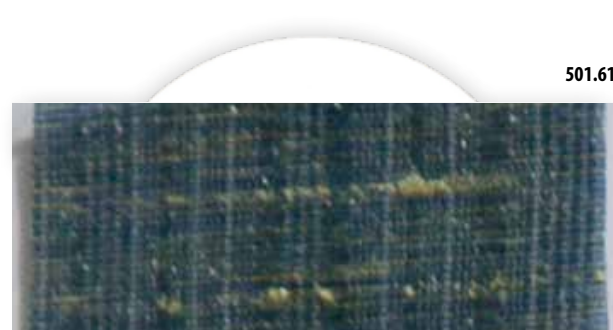
336.02 PG 2 PES



220.27 PG 2 PES



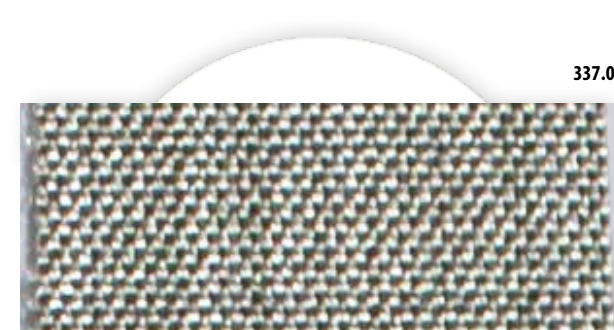
501.35 PG 2 PES



501.61 PG 2 PES



068.04 PG 2 PES



337.01 PG 3 PES



412.04 PG 2 T-CS



319.27 PG 2 PES



319.36 PG 2 PES



190.59 PG 0 PES



501.84 PG 2 PES



337.03 PG 3 PES



220.04 PG 2 PES





027.03

027.03

027.03

027.03



Geringe Abweichungen bei Farbe und Struktur können nicht ausgeschlossen werden und berechtigen nicht zur Reklamation. | Geringe afwijkingen van kleur of structuur kunnen niet uitgesloten worden en zijn geen grond voor reclamatie. | Slight differences in colour and structure cannot be excluded and do not justify complaints. | De lables overigence en couleur et structure ne peuvent pas être excus et ne justifient pas de réclamation.



064.21

PG 3

PES



064.22

PG 3

PES



214.21

PG 4

PES



214.22

PG 4

PES



027.00

PG 5

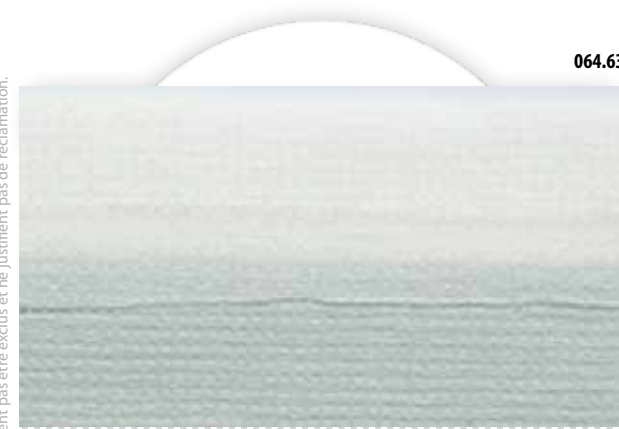
PES



027.95

PG 5

PES



064.63

PG 3

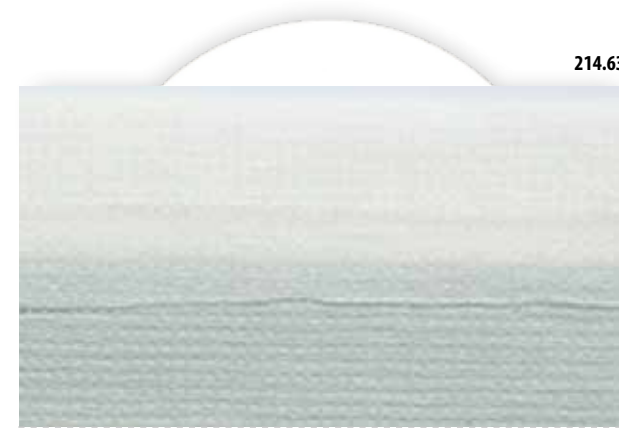
PES



064.15

PG 3

PES



214.63

PG 4

PES



214.15

PG 4

PES



027.20

PG 5

PES



027.29

PG 5

PES



064.24

PG 3

PES



064.01

PG 3

PES



214.24

PG 4

PES



214.01

PG 4

PES



027.18

PG 5

PES



027.37

PG 5

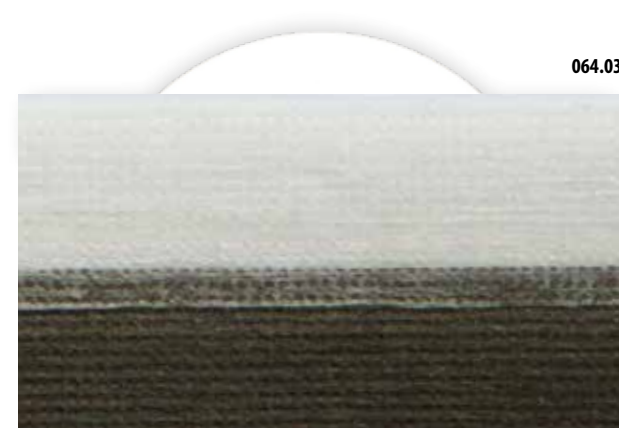
PES



064.28

PG 3

PES



064.03

PG 3

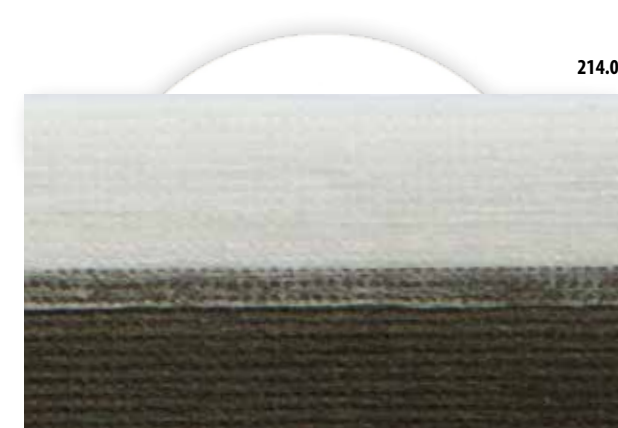
PES



214.28

PG 4

PES



214.03

PG 4

PES



027.02

PG 5

PES



027.03

PG 5

PES