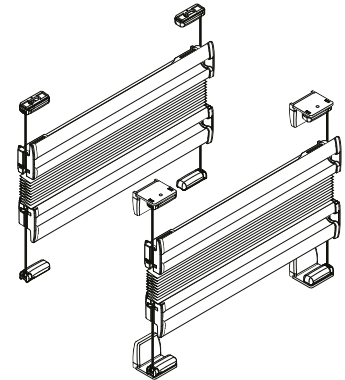


# VS2ML/ ESG2ML

## Montage- und Bedienungsanleitung

*Assembly and operating instructions  
Notice de montage et mode d'emploi*



**04 / 2024**

technische Änderungen bleiben  
vorbehalten

*subject to technical change  
sous réserve de modifications techniques*



04046046664581

# A Montage

Fixation – Montage

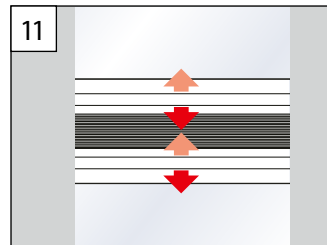
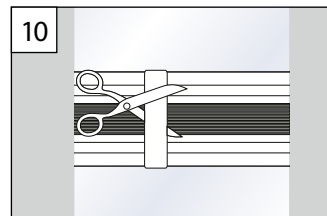
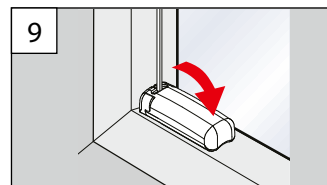
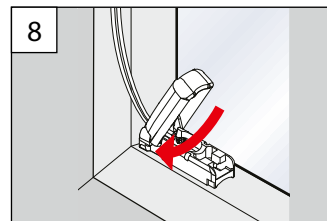
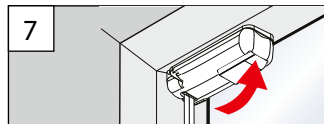
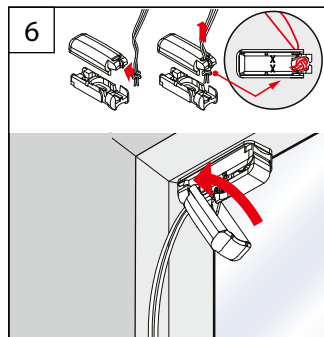
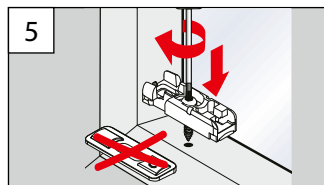
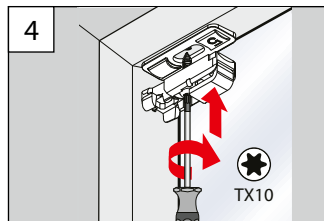
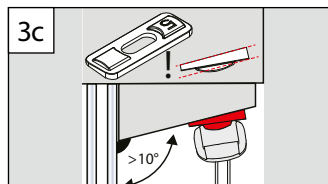
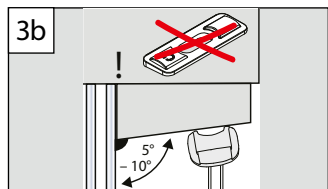
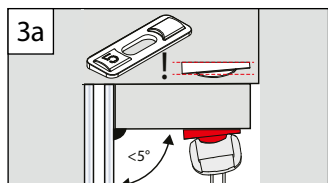
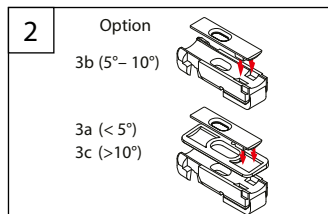
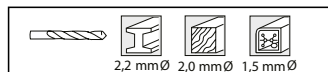
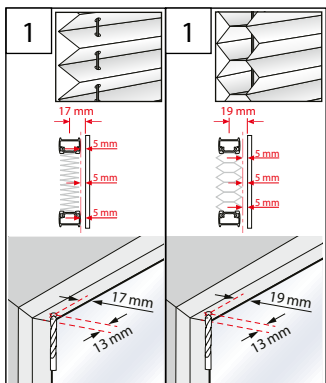
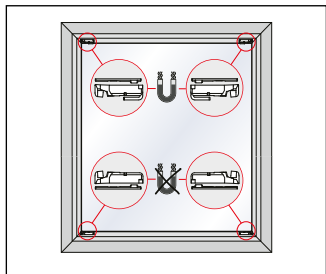


→ **Bitte nur beiliegende Schrauben verwenden!**

Please use only the enclosed screws! –  
Veuillez utiliser seulement les vis jointes!

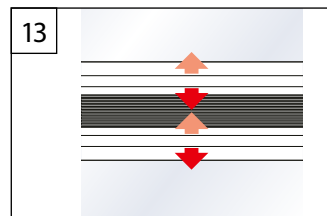
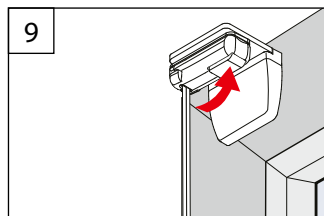
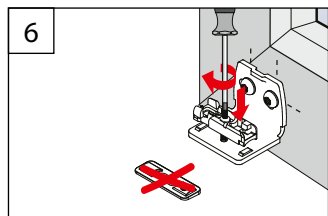
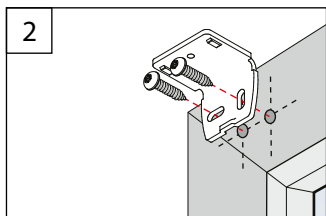
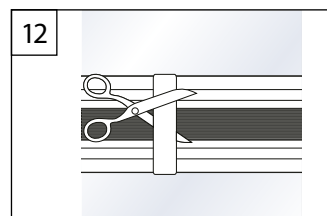
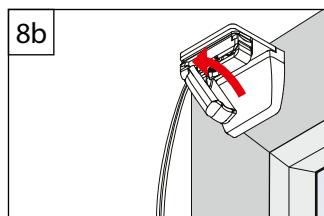
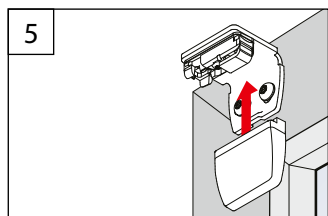
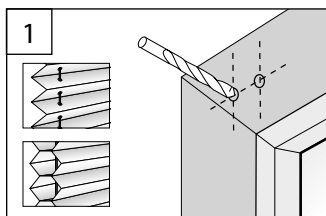
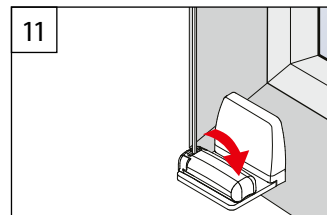
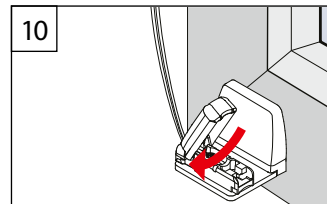
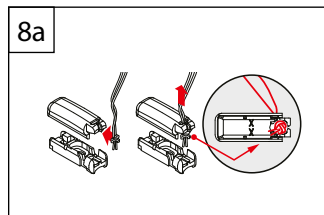
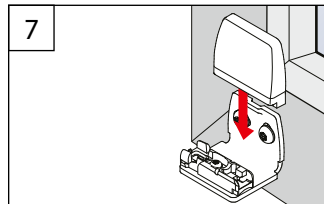
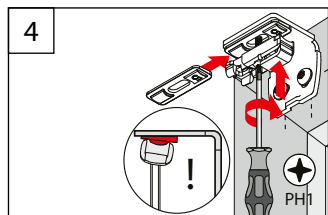
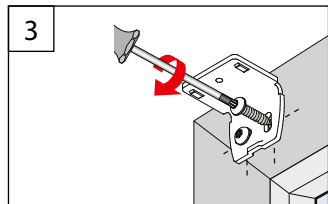
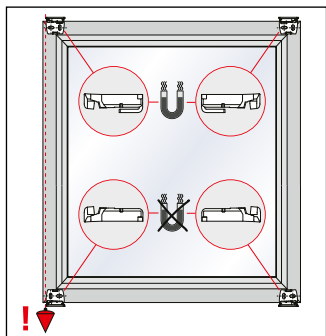
## SPANNSCHUH

TENSION CORD BRACKET – SUPPORT DE CÂBLES



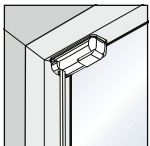
# WANDWINKEL

WALL FIXING BRACKET - SUPPORT MURAL

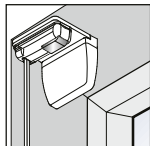
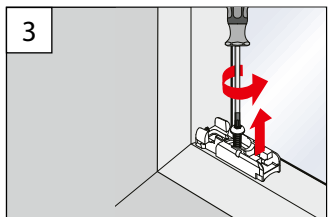
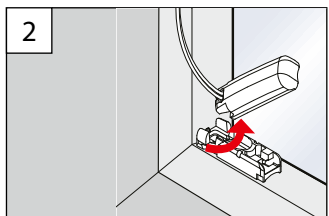
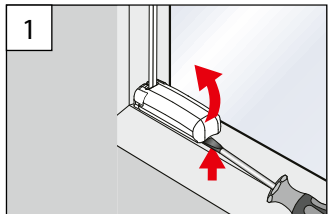


## B Demontage

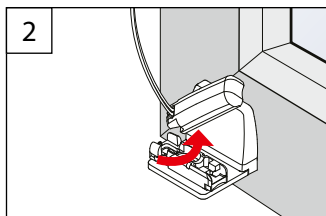
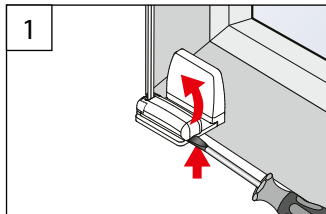
Dismantling – Démontage



**SPANNSCHUH**  
TENSION CORD BRACKET  
SUPPORT DE CÂBLES



**WANDWINKEL**  
WALL FIXING BRACKET  
SUPPORT MURAL



## C Option

Option – Option

