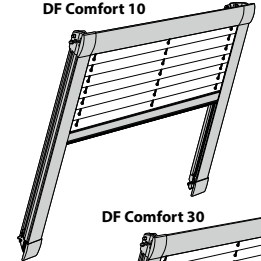


DF Comfort 10/30

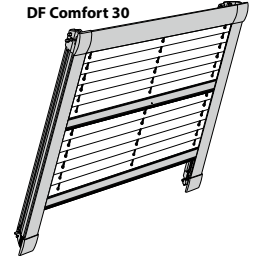
Montage- und Bedienanleitung

Assembly and operating instructions
Notice de montage et mode d'emploi

DF Comfort 10



DF Comfort 30



10 / 2014

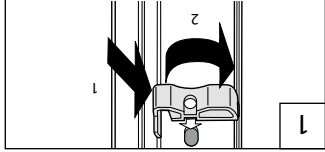
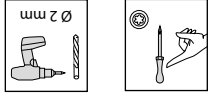
technische Änderungen bleiben
vorbehalten

subject to technical change
sous réserve de modifications techniques

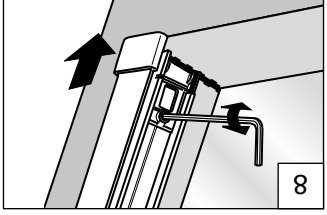
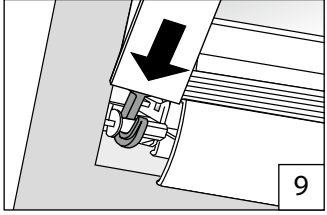
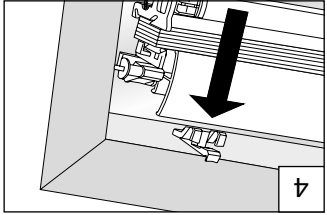
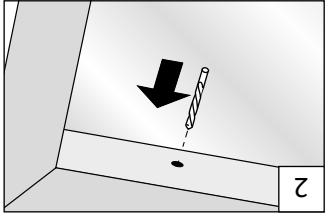
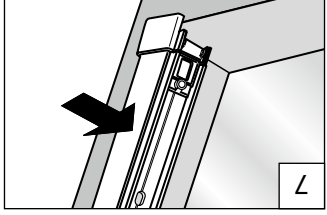
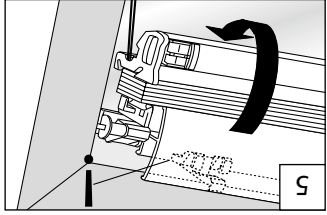
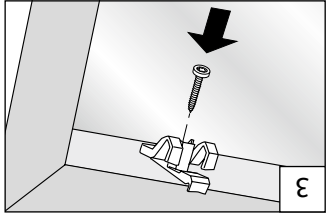
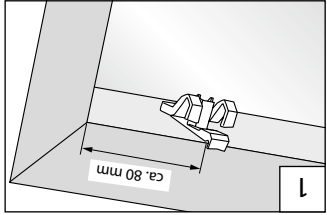
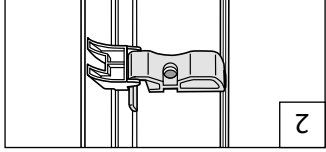
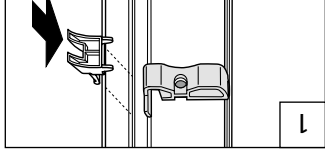


-> Bitte nur beiliegende Schrauben verwenden!

Please use only the enclosed screws! - Veuillez utiliser seulement les vis jointes!



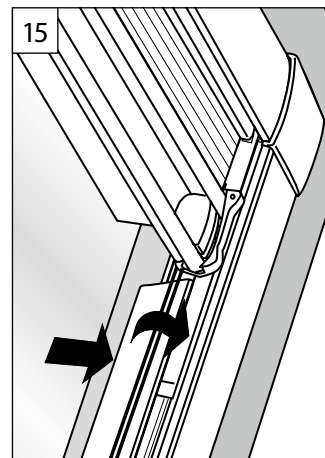
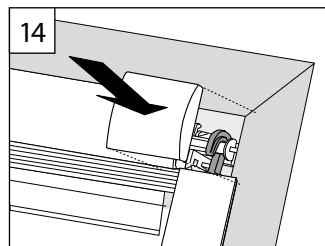
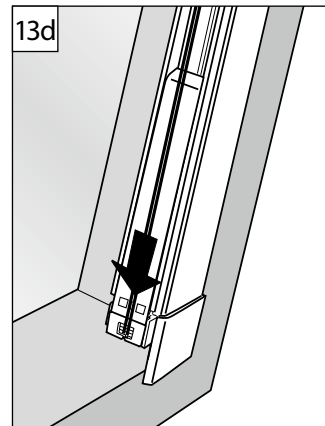
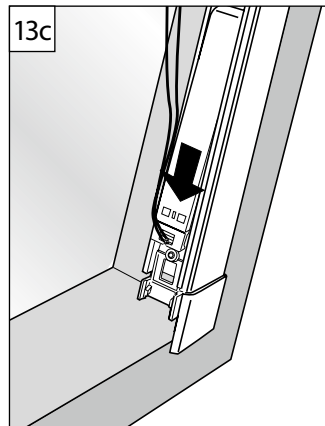
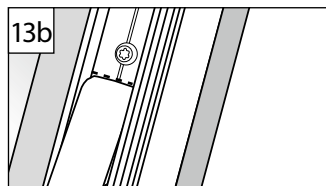
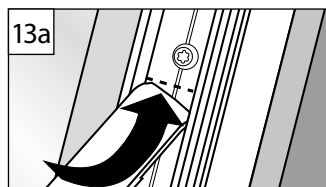
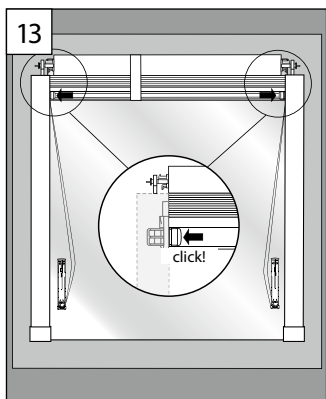
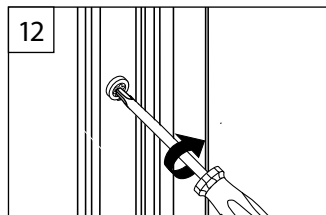
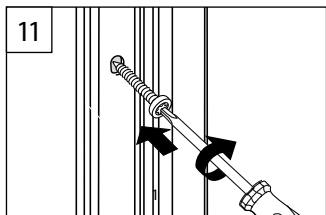
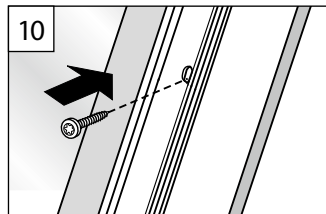
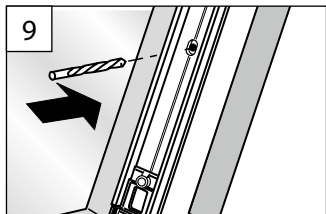
VORBEREITUNG
PRÉPARATION - PRÉPARATION

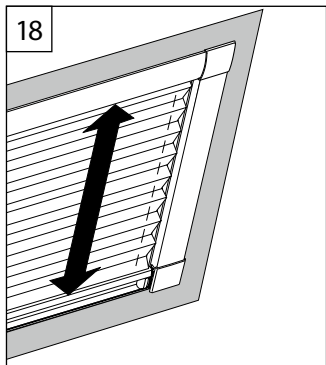
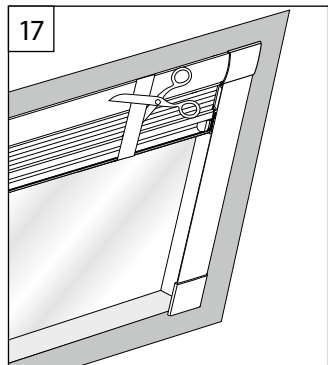
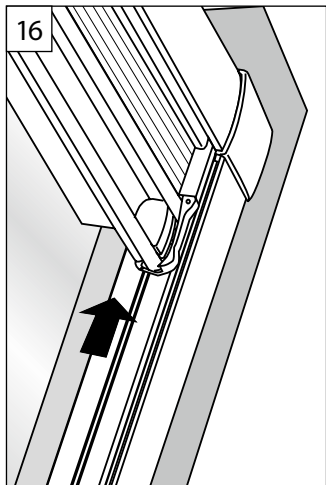


1

2

Roto R6... R8... 6... K... 8... K...





B Demontage

Dismantling - Démontage

