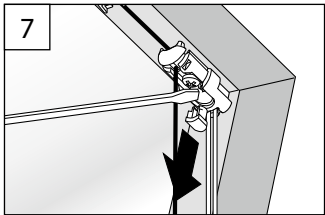
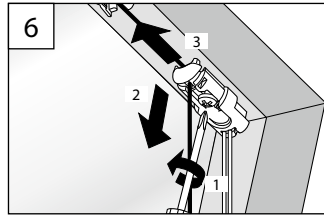
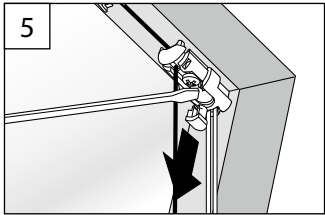
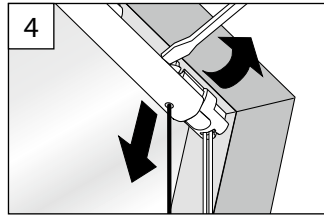
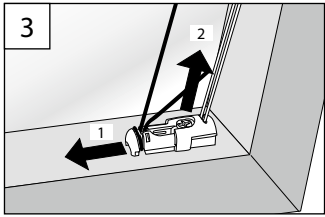
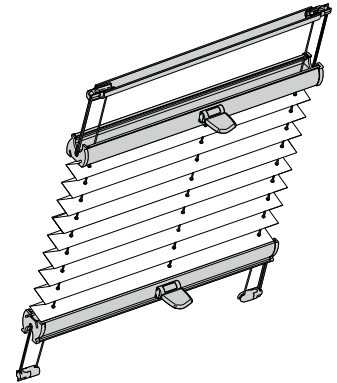


DF20

Montage- und Bedienanleitung

Assembly and operating instructions
Notice de montage et mode d'emploi



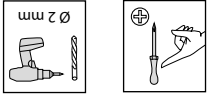
10 / 2014

technische Änderungen bleiben
vorbehalten

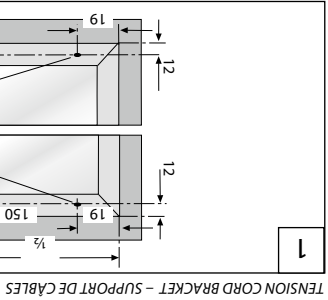
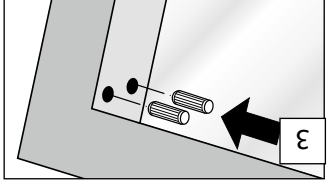
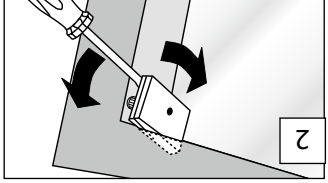
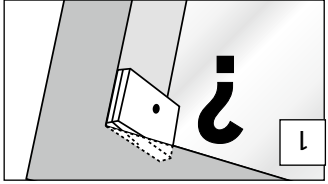
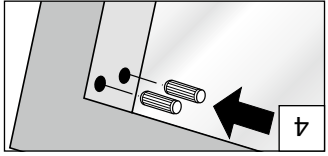
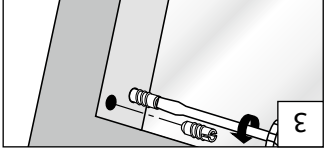
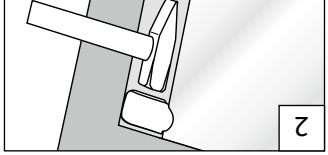
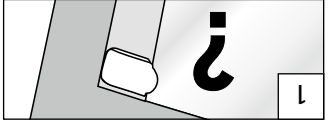
subject to technical change
sous réserve de modifications techniques



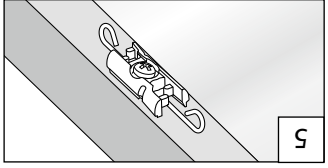
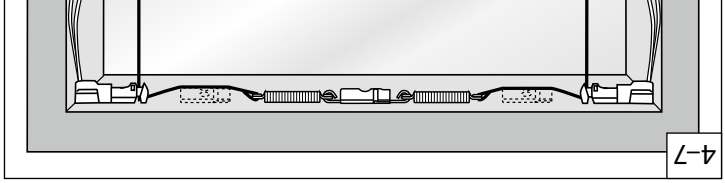
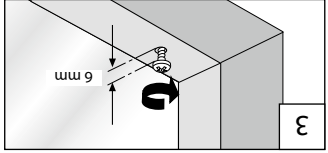
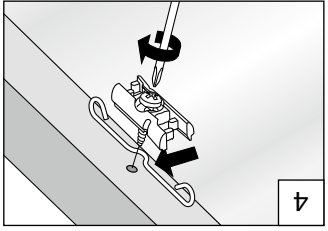
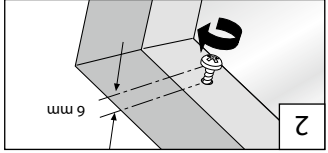
→ Bitte nur beiliegende Schrauben verwenden!
Please use only the enclosed screws! - Veuillez utiliser seulement les vis jointes!



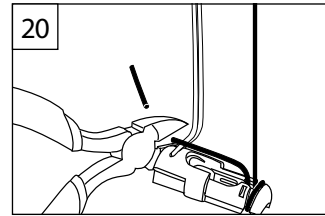
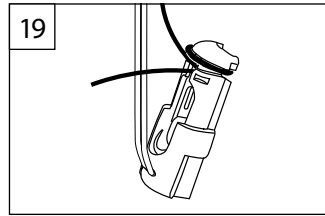
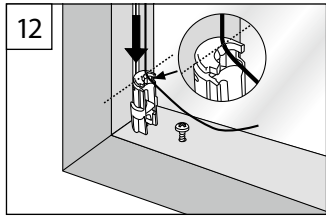
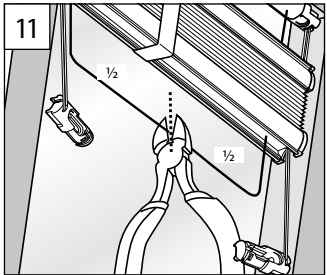
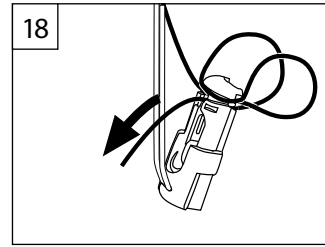
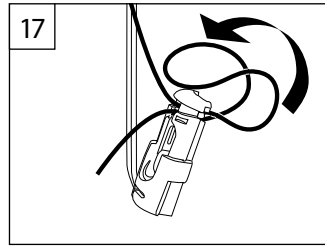
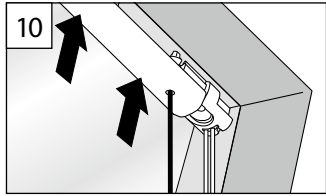
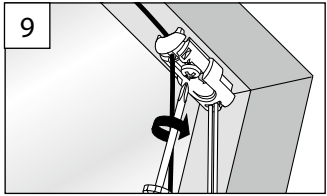
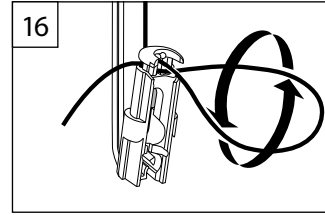
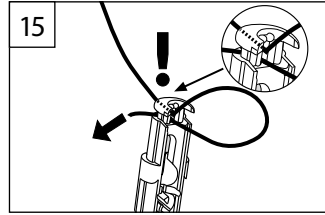
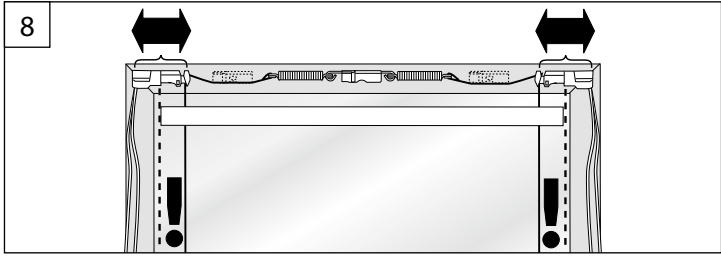
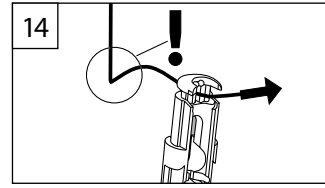
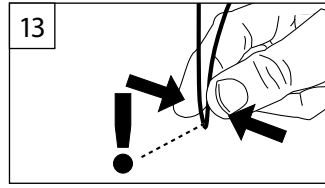
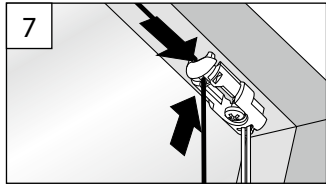
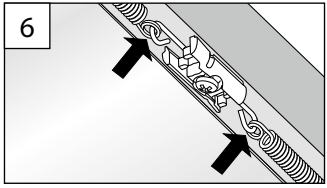
VORBEREITUNG
PRÉPARATION - PRÉPARATION

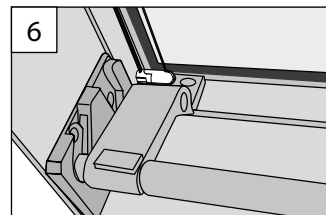
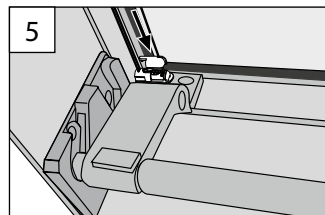
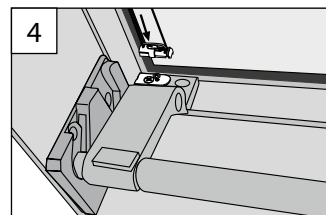
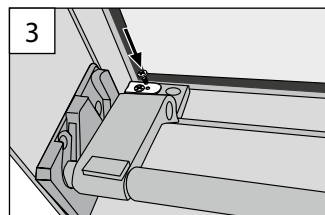
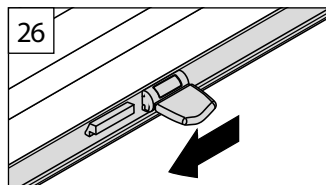
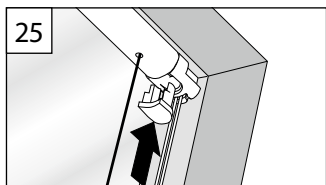
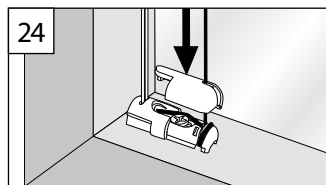
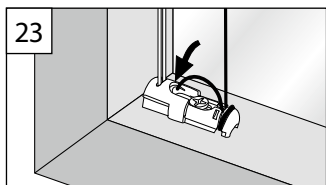
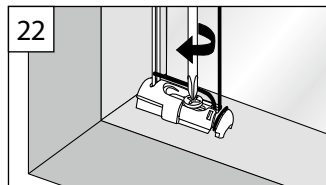
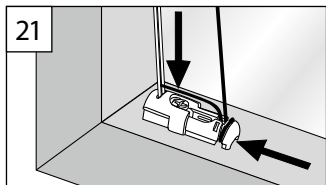


TENSION CORD BRACKET - SUPPORT DE CÂBLES



SPANNSCHUH





B Demontage

Dismantling – Démontage

SPANNSCHUH

TENSION CORD BRACKET – SUPPORT DE CÂBLES

BRAAS ERGÄNZUNG

BRAAS SUPPLEMENTING – COMPLÉMENT BRAAS

