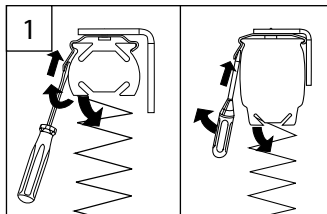


DECKENCLIP

CEILING CLIP – CLIP PLAFOND



**PL11,
PLK13 (Kurbel)**

PLK13 (crank) – PLK13 (manivelle)

PLE12 (Motor)

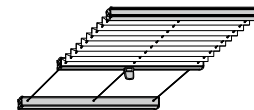
PLE12 (motor) – PLE12 (moteur)

**Montage- und
Bedienanleitung**

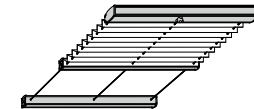
Assembly and operating instructions

Notice de montage et mode d'emploi

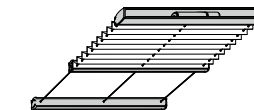
PL11



PLK13 (Kurbel)



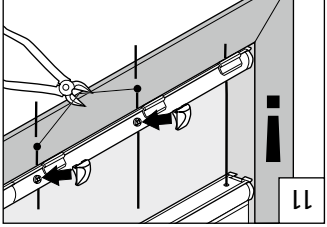
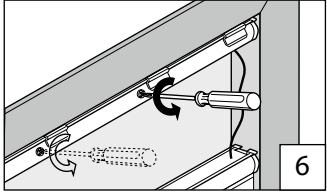
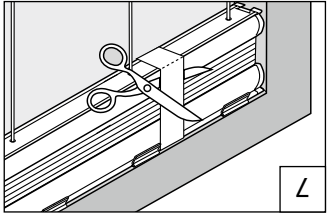
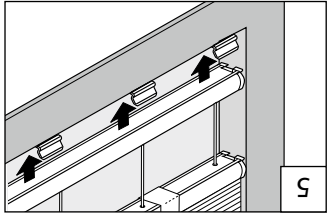
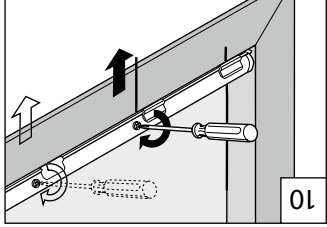
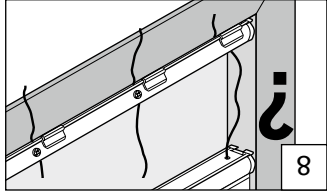
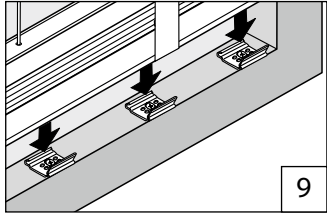
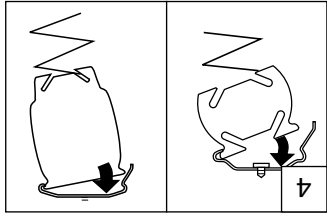
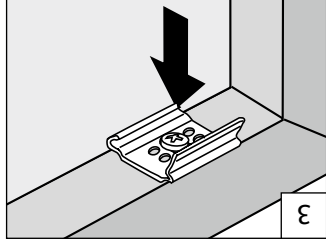
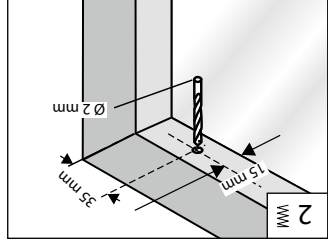
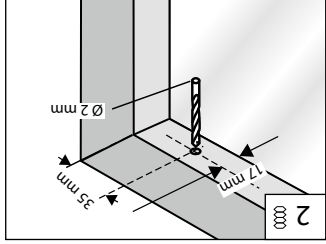
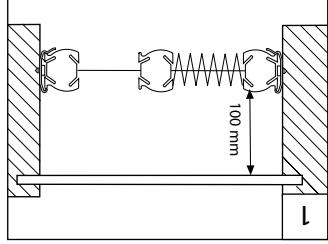
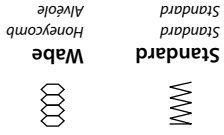
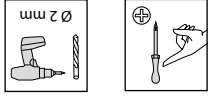
PLE12 (Motor)

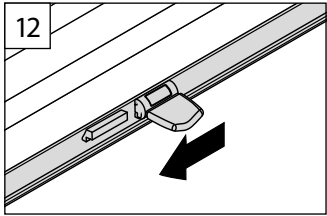


10 / 2014 technische Änderungen
bleiben vorbehalten



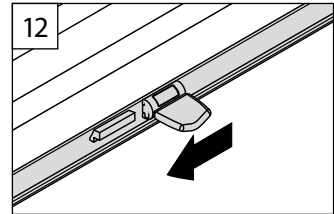
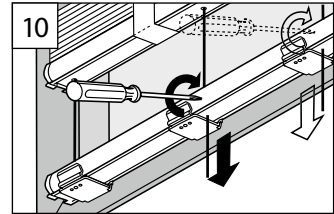
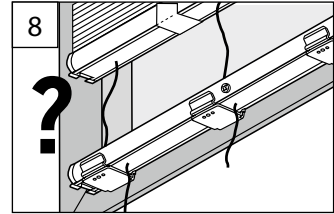
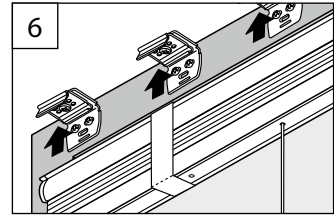
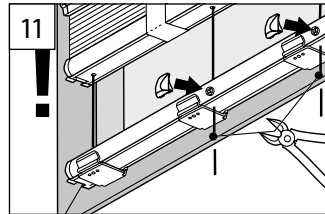
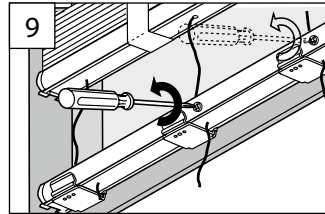
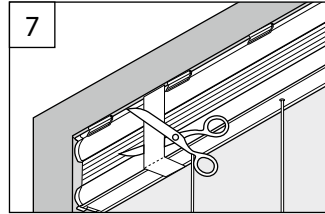
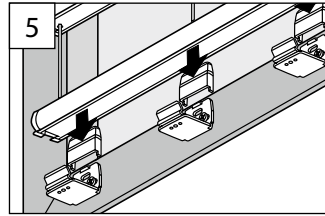
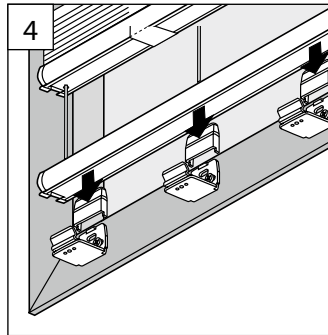
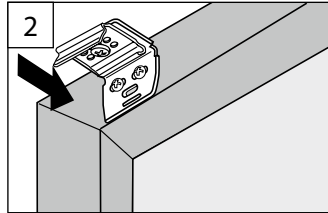
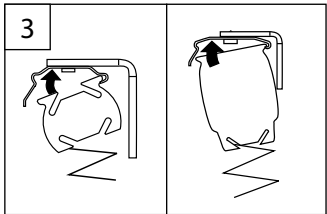
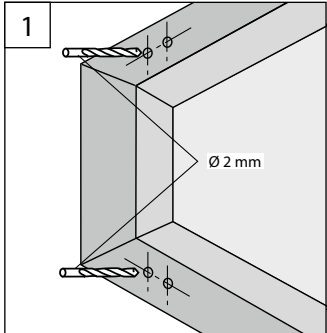
→ Bitte nur beiliegende Schrauben verwenden!
Please use only the enclosed screws! - Veuillez utiliser seulement les vis jointes!





DECKENCLIP / WANDWINKEL

CEILING CLIP / WALL FIXING BRACKET – CLIP PLAFOND / SUPPORT MURAL



B Bedienung

Operation – Manipulation

