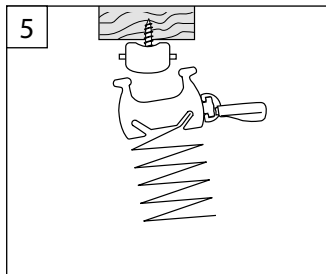
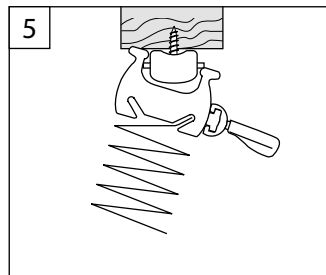
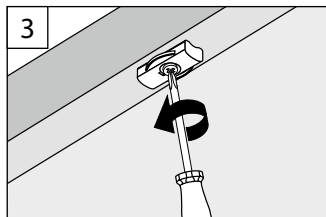
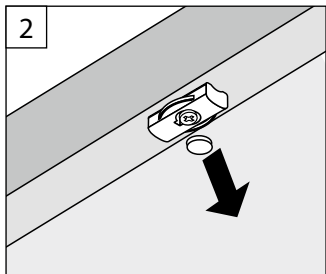
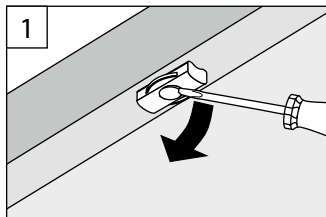


B Demontage Klemmschuh

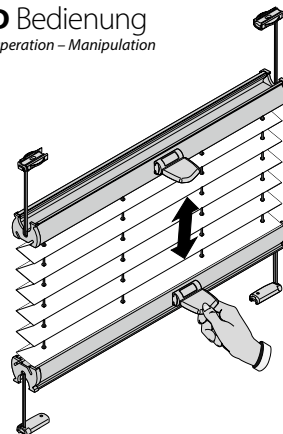
Dismantling of the clamping shoe.

Démontage de la mâchoire de serrage



D Bedienung

Operation - Manipulation



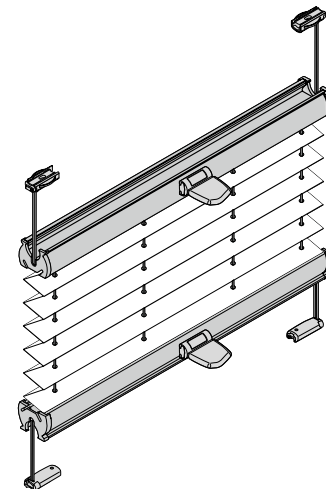
Plissees

Pleated blinds - Stores plissés

VS2

Montage- und Bedienanleitung

*Assembly and operating instructions
Notice de montage et mode d'emploi*



10 / 2014

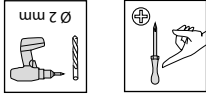
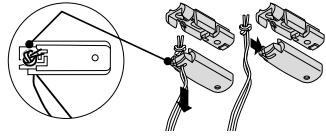
technische Änderungen bleiben
vorbehalten

*subject to technical change
sous réserve de modifications techniques*

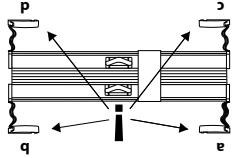
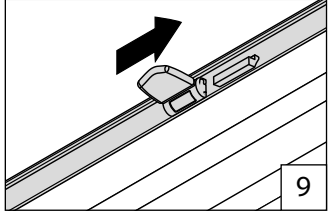
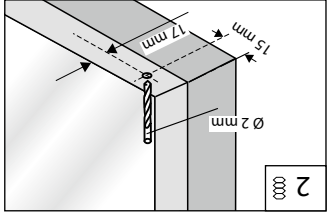
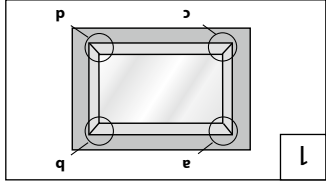


→ Bitte nur beliegende Schrauben verwenden!

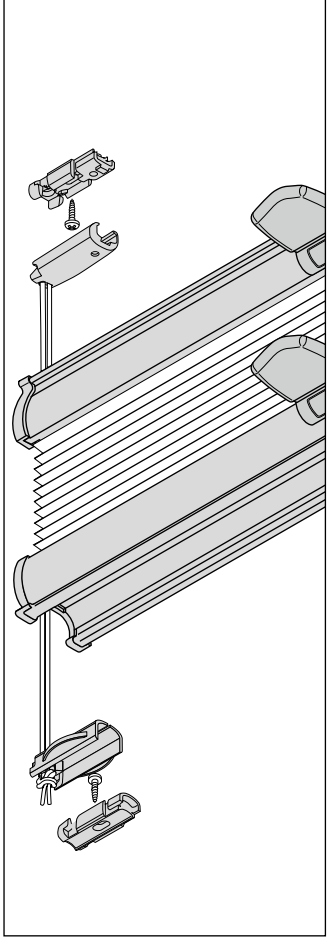
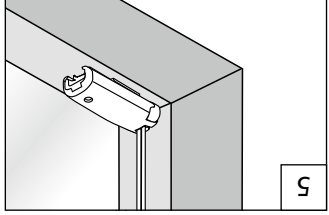
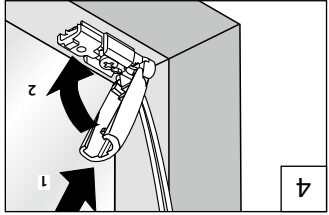
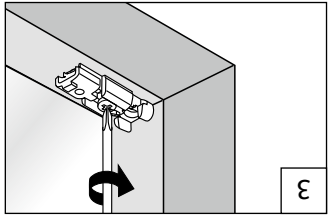
Please use only the enclosed screws! - Veuillez utiliser seulement les vis jointes!



SPANNSCHUH
TENSION CORD BRACKET
SUPPORT DE CÂBLES

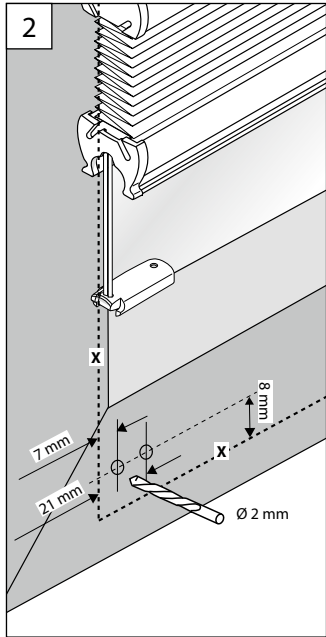
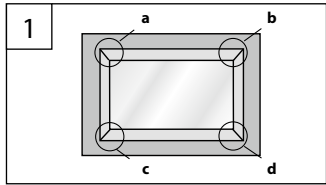


Standard
Standard
Wabe
Honeycomb
Alvéole



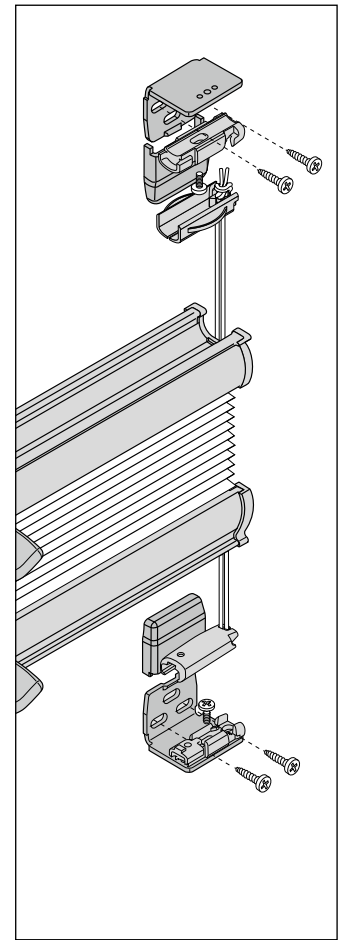
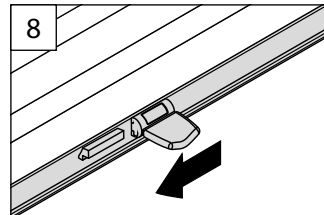
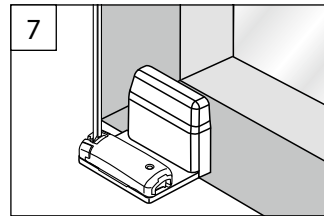
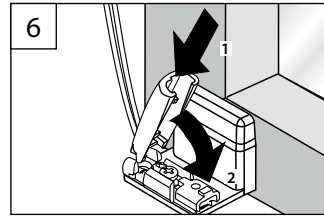
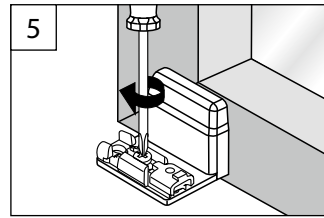
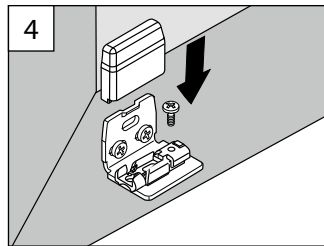
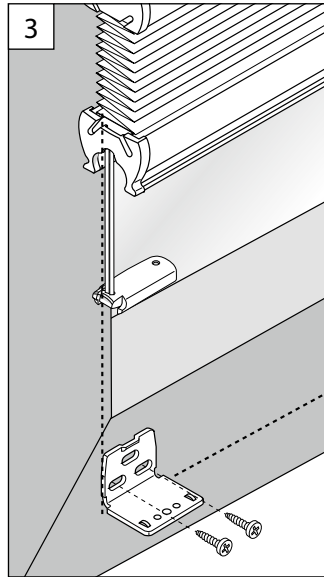
WANDWINKEL

WALL FIXING BRACKET - SUPPORT MURAL



X = BestellmaÙe

X = Order measures - X = Mesures d'ordre

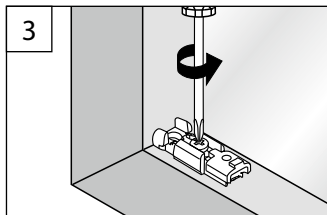
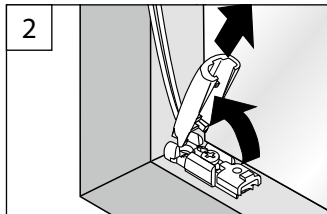
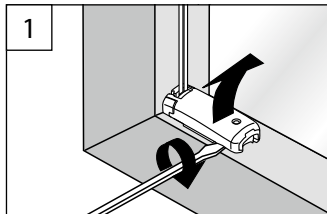


B Demontage

Dismantling – Démontage

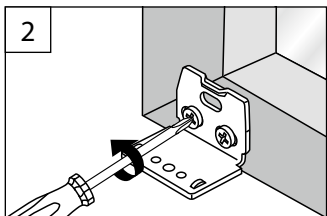
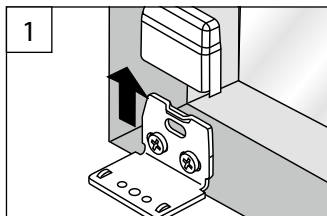
SPANNSCHUH

TENSION CORD BRACKET – SUPPORT DE CÂBLES



WANDWINKEL

WALL FIXING BRACKET – SUPPORT MURAL

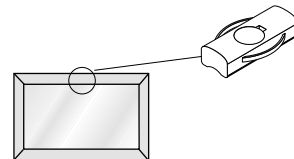


5

C Montage Klemmschuh

Fixation of the clamping shoe

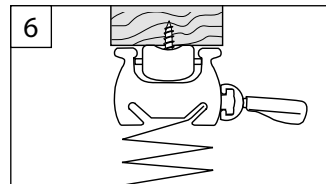
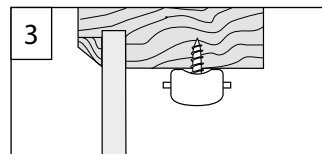
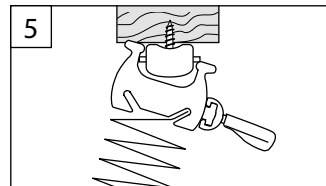
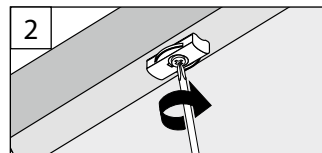
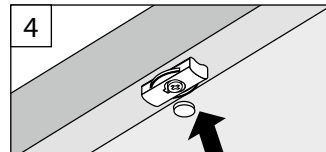
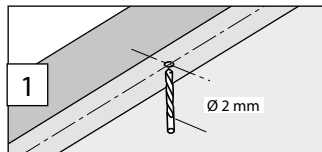
Fixation de la mâchoire de serrage



Hinweis: Klemmschuh Anlagen-Mitte ist nicht Bestandteil der Standardlieferung und kann extra unter 643043... nachbestellt werden

Advice: The clamping shoe for the middle of the installation is not included in the standard delivery and can be reordered under 643043...

Avis: La mâchoire de serrage pour le centre de l'installation est pas comprise dans la livraison standard est peut être commandée sous 643043...



6