

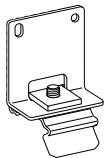
 Plissees
pleated blinds – stores plissés

F1, F3 für Verbundfenster

composite window - fenêtre composite

Montage- und
Bedianleitung

assembly and operating instructions
notice de montage et mode d'emploi



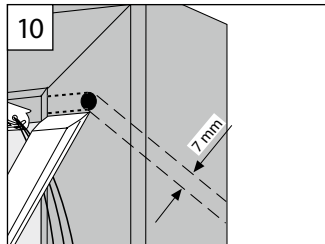
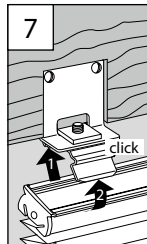
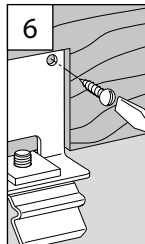
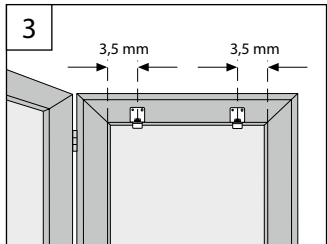
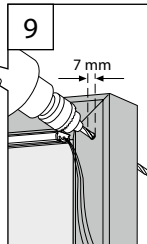
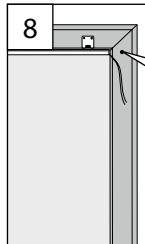
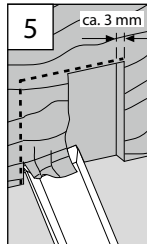
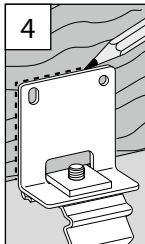
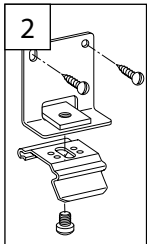
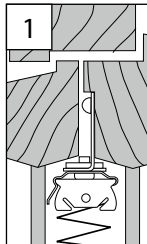
12 / 2011

Technische Änderungen bleiben
vorbehalten
subject to technical change
sous réserve de modifications techniques

799 028 513

Montage

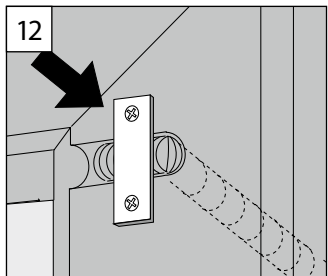
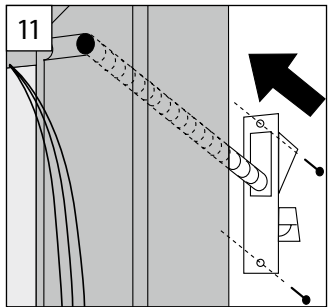
fixation – montage



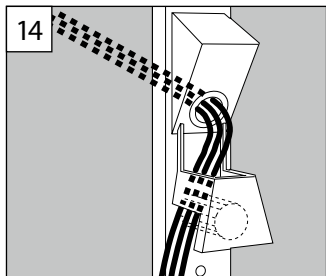
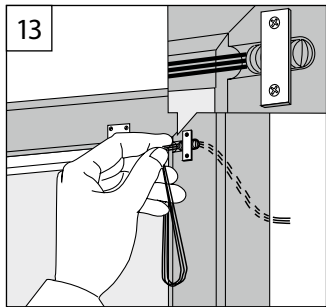
1

2

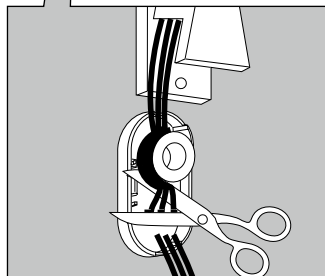
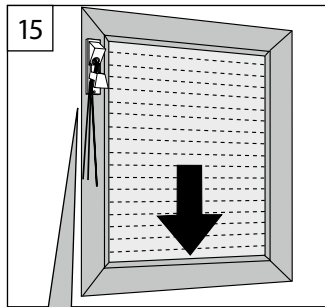
3



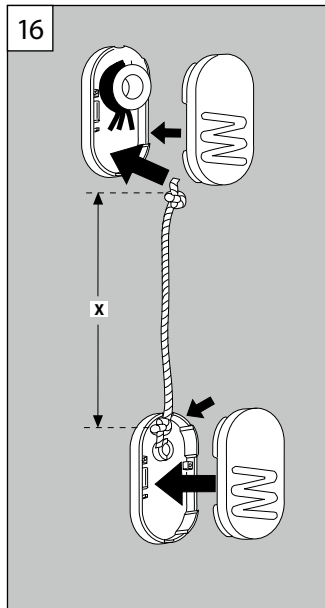
4



5



6



7