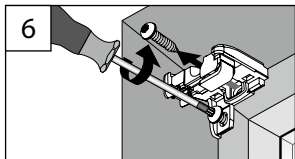
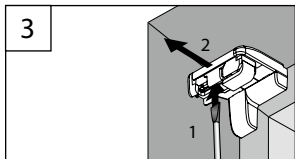
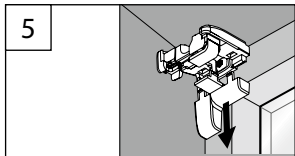
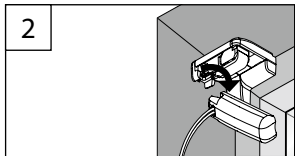
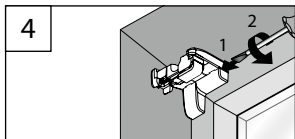
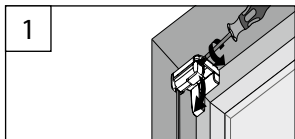


## B Demontage

Dismantling – Démontage



5

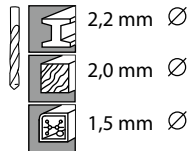
6

Wichtig!

Bitte mit der Pflegeanleitung aufbewahren!

Important! Please keep together with care instructions!

Important! Conserver ensemble avec les conseils d'entretien!



02 / 2021

technische Änderungen bleiben vorbehalten

subject to technical change

sous réserve de modifications techniques

Plissees

Plated blinds – Stores plissés

## Glasleistenwinkel

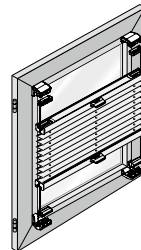
Beading bracket –

Equerre pour feuillure de fenêtre

## Montage- und Bedienanleitung

Assembly and operating instructions

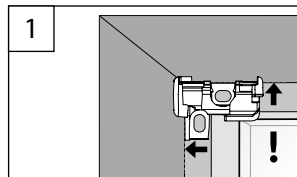
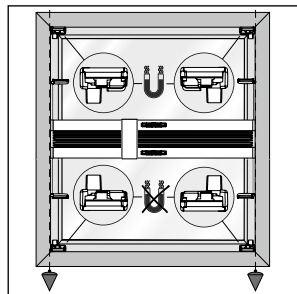
Notice de montage et mode d'emploi



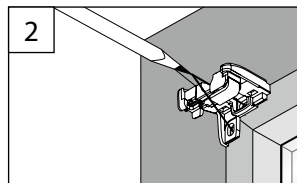
04046046452829

# A Montage

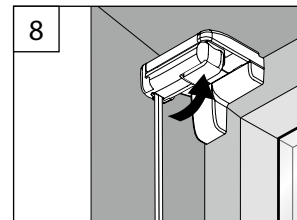
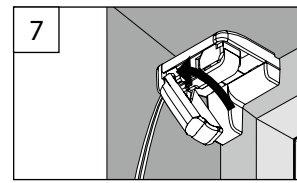
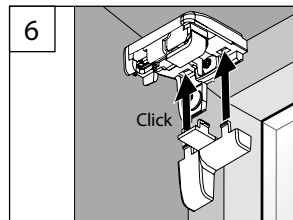
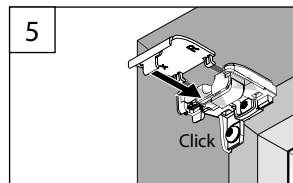
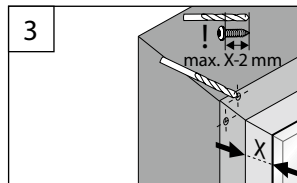
Fixation – Montage



1



2



3

4