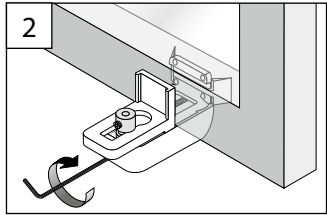
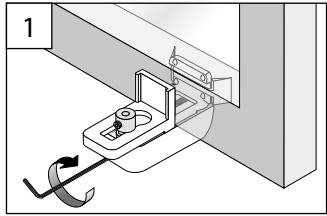


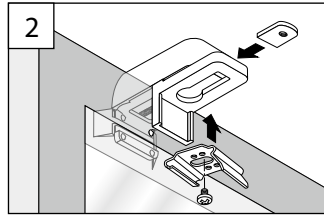
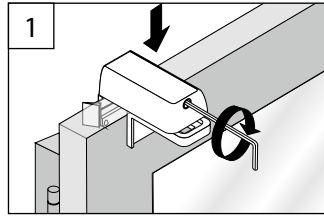
C Pendelsicherung (System B)

Cord guiding – câbles de guidage



D Clip - Montage

Installation of the clip – Montage du clip



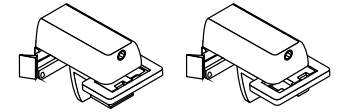
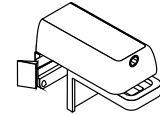
Plissee

Plated blinds – Stores plissés

Klemmträger

Block holder
Support pour fenêtres PVC

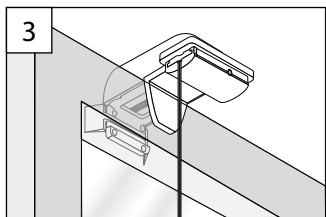
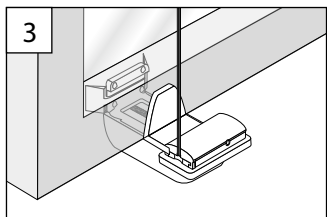
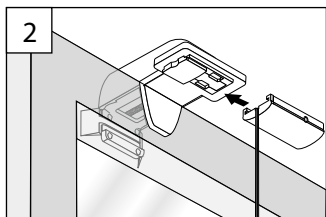
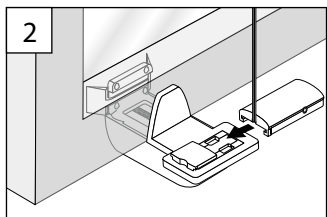
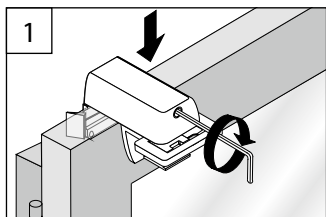
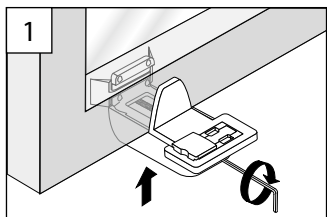
Montage- und
Bedienanleitung
Assembly and operating instructions
Notice de montage et mode d'emploi



A Montage – Spannschuh (System erfal)

Fixation – tension cord bracket (system erfal)

Montage – support de cordon de tension (système erfal)

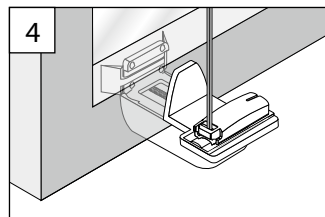
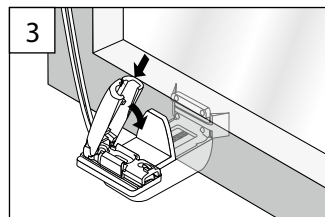
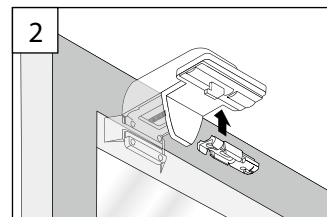
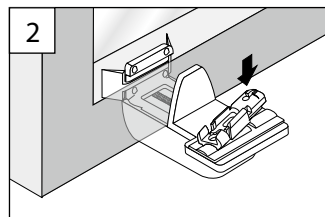
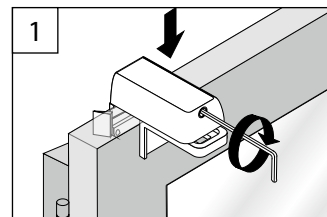
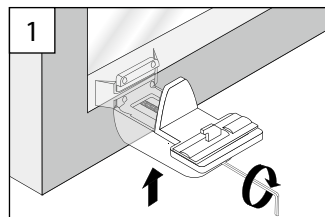


1

B Montage – Spannschuh (System 21)

Fixation – tension cord bracket (system B)

Montage – support de cordon de tension (système B)



2