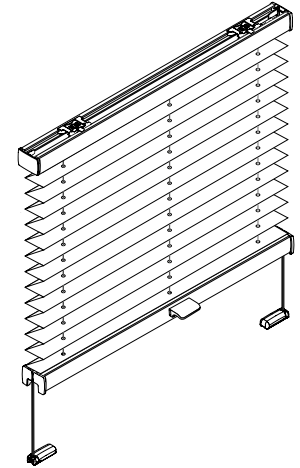


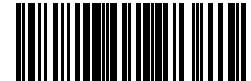
VS1, VS3, VS SD

Montage- und
Bedienanleitung
Assembly and operating instructions
Notice de montage et mode d'emploi



02 / 2021

technische Änderungen bleiben
vorbehalten
subject to technical change
sous réserve de modifications techniques



04046046444572

A Montage

Fixation – Montage

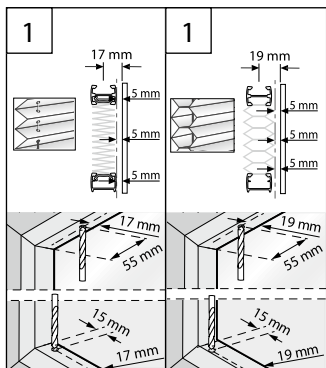
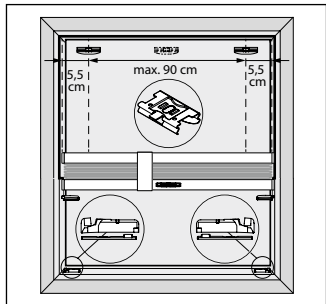
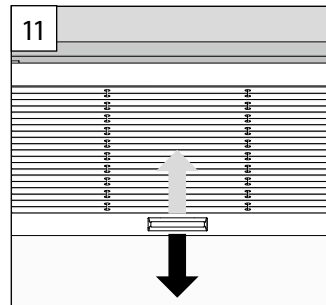
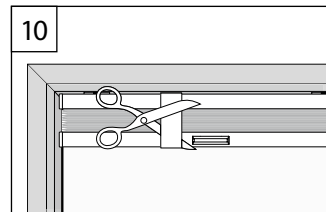
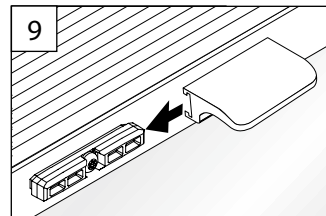
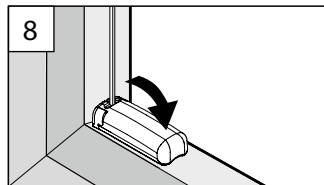
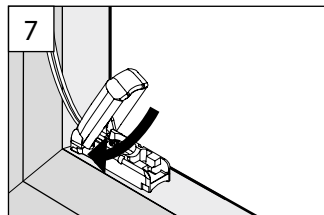
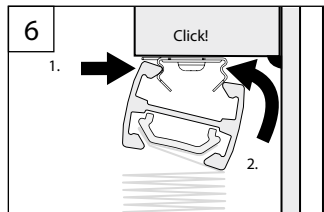
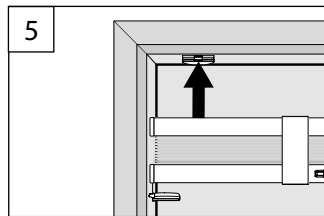
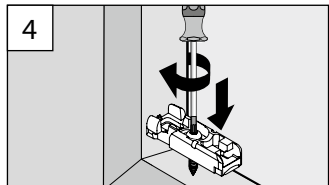
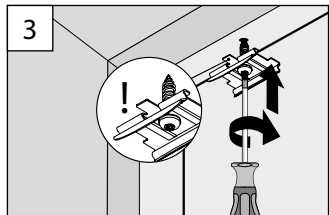
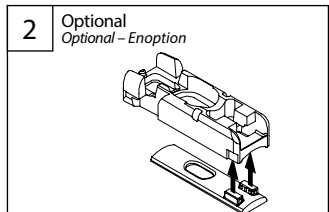
→ Bitte nur beiliegende Schrauben verwenden!

Please use only the enclosed screws! – Veuillez utiliser seulement les vis jointes!

DECKENCLIP / SPANNSCHUH

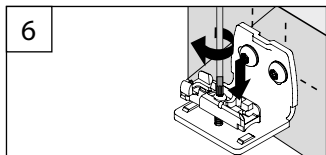
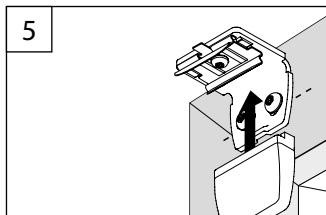
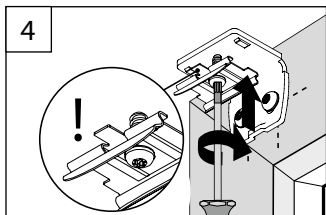
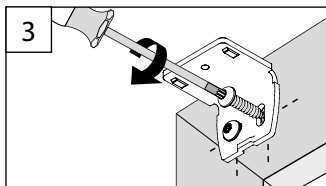
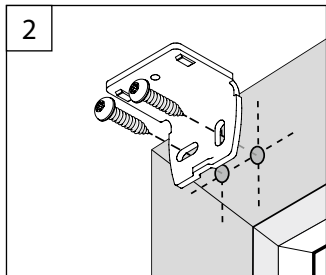
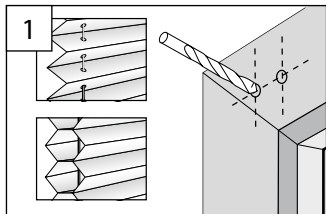
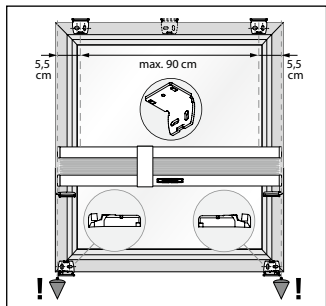
CEILING CLIP / TENSION CORD BRACKET

CLIP PLAFOND / SUPPORT DE CÂBLES

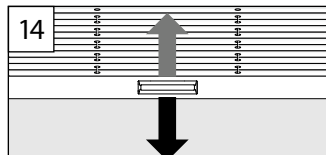
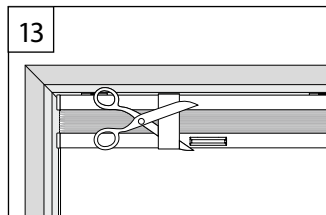
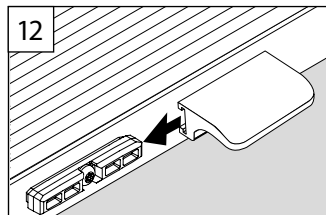
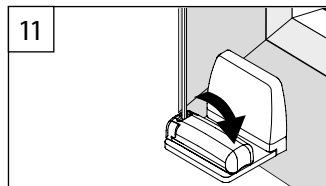
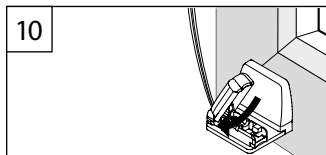
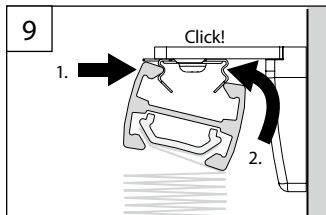
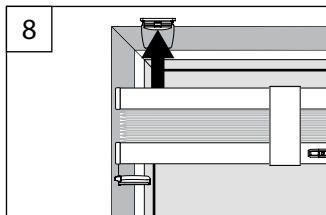
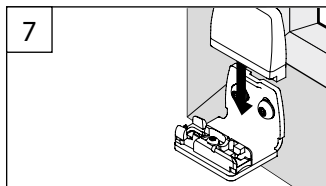


DECKENCLIP / WANDWINKEL

CEILING CLIP / WALL FIXING BRACKET – CLIP PLAFOND / SUPPORT MURAL



3



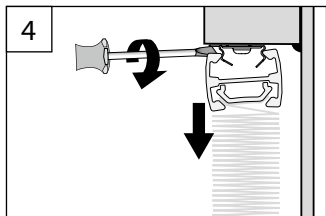
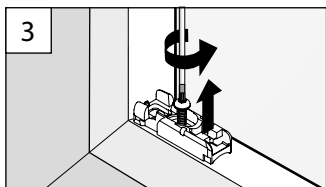
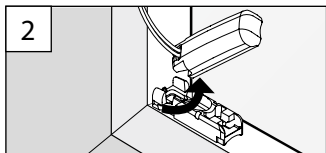
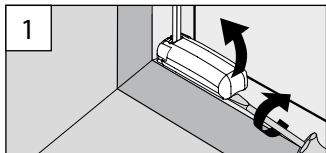
4

B Demontage

Dismantling – Démonstration

SPANNSCHUH

TENSION CORD BRACKET – SUPPORT DE CÂBLES



WANDWINKEL

WALL FIXING BRACKET – SUPPORT MURAL

