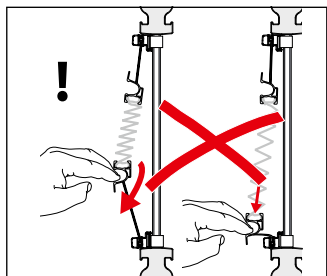
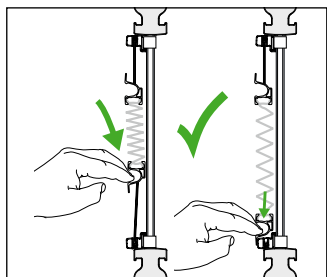
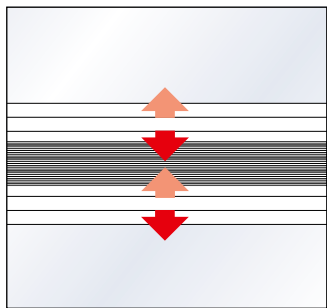


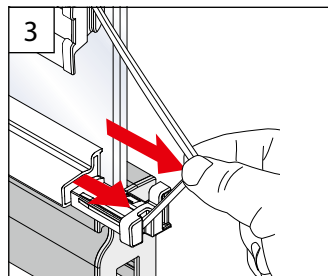
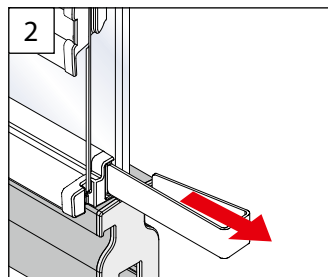
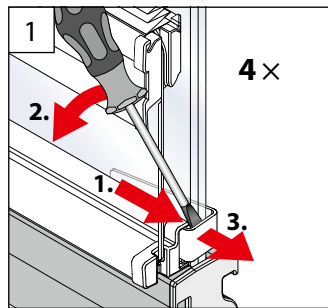
B Bedienung

Operation – Manipulation



C Demontage

Dismantling – Démontage



3

Plisseees
Pleated blinds – Stores plissés

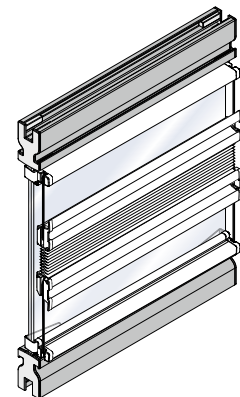
VS2 SL Loggia verspannt

VS2 SL Loggia Tensioned types
VS2 SL Loggia Types tendus

Montage- und Bedienanleitung

Assembly and operating instructions
Notice de montage et mode d'emploi

für Senkrecht- und Drehkippenfenster
for vertical and tilt and turn windows
pour fenêtres verticales et rotobasculantes



entspricht EN 13120
according to EN 13120 – selon EN 13120

03 / 2026

technische Änderungen bleiben
vorbehalten
subject to technical change
sous réserve de modifications techniques



04046046690696

A Montage

Fixation - Montage

MONTAGE AN BALKON- VERGLASUNGEN

FIXING AT BALCONY GLAZING
FIXATION SUR LES VITRAGES DE BALCON

