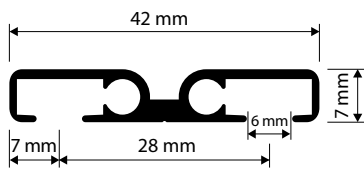


# Schnurzugschiene 5500

Aluschiene

## System 5500



### PRODUKTMERKMALE

- sehr flaches und dezentes Schnurzugprofil
- für den Wohnbereich einsetzbar
- Deckenmontage
- Spurbreite 6 mm
- Lagerlänge 6 m

### LIEFERBARE FARBEN

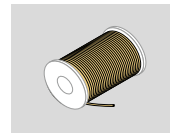
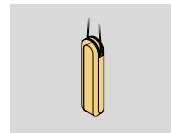
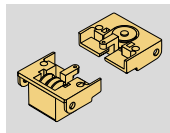
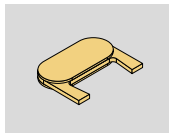
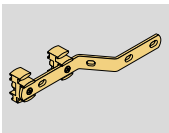
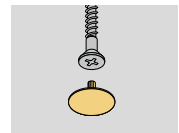
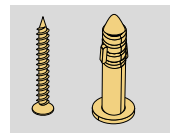
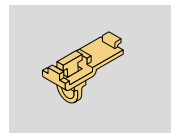
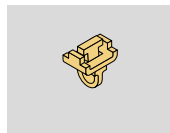


weiß (RAL 9016)

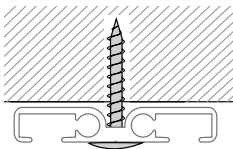


silber (eloxiert)

### STANDARDKOMPONENTEN



### MONTAGEMÖGLICHKEITEN



Genauere Bezeichnung von Standardkomponenten finden Sie unter **Zubehör**.

### BIEGUNG

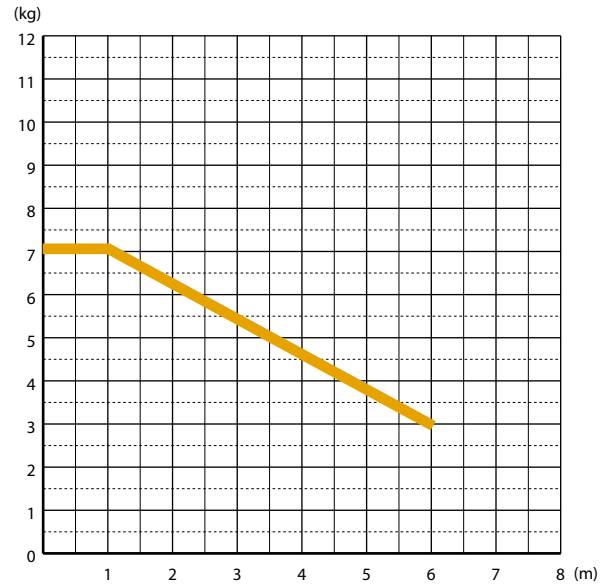


vertikale Biegung

mögliche Radien: **20 cm, ab 40 cm jeder Radius**

# Schnurzugschiene 5500

Aluschiene



## VERTIKAL GEBOGEN – TORBOGEN BZW. DACHSCHRÄGE

